



HP PRO x360 FORTIS 11-INCH G9/G10

DURABLE AND VERSATILE
x360 DESIGN FOR
PRODUCTIVITY EVERYWHERE.



HP FORTIS

Latin for strong, Fortis embodies the strength and durability of HP devices built for active and mobile users.

Built strong.
Built to last.
Built for everybody.

BUILT TO ENDURE

HP FORTIS



WAREHOUSE

Working with heavy machinery and tools, among large equipment and roaming people and vehicles.



FIELDWORK

Working from a vehicle, traveling constantly to different locations, while staying connected to the office and customers



HOME HEALTH

Mobile healthcare professionals sharing devices within the hospital and with patients at home



EDUCATION

Students are learning in a blended world, requiring rugged devices to support learning for wherever life takes them

NEVER MISS A LEARNING OPPORTUNITY



IGNITE CREATIVITY

Draw diagrams, solve equations, take notes, and more with the HP active pen charged and garaged^{1,56} right above the keyboard.

LIMITLESS LEARNING

Wi-Fi 6E² provides enhanced connectivity bandwidth & speeds (G10 only) and 4G LTE³ (G9 only) to help connect in remote areas

ENHANCED DURABILITY

Pick-resistant, reinforced, and anchored skirt keys, combined with additional durability enhancements enable devices to stand up to the increased daily use.⁴

KEEP WORK MOVING WHEREVER WORK HAPPENS



DESIGNED TO ENDURE YOUR BUSINESS ENVIRONMENT

- Drop tested⁵ from 122cm on plywood, 76cm on concrete.
- Undergoes 19 MIL-STD 810⁶ tests to help ensure it can withstand the elements
- Tested for 1000 cleanings with disinfectant wipes⁷
- Tumble tested to 1000 cycles⁵⁴

CONNECTING PEOPLE ON THE GO

- Wi-Fi 6E² provides enhanced connectivity bandwidth & speeds (G10 only)
- 4G LTE³ to help connect in remote areas (G9 only)

KEEPING PEOPLE PRODUCTIVE

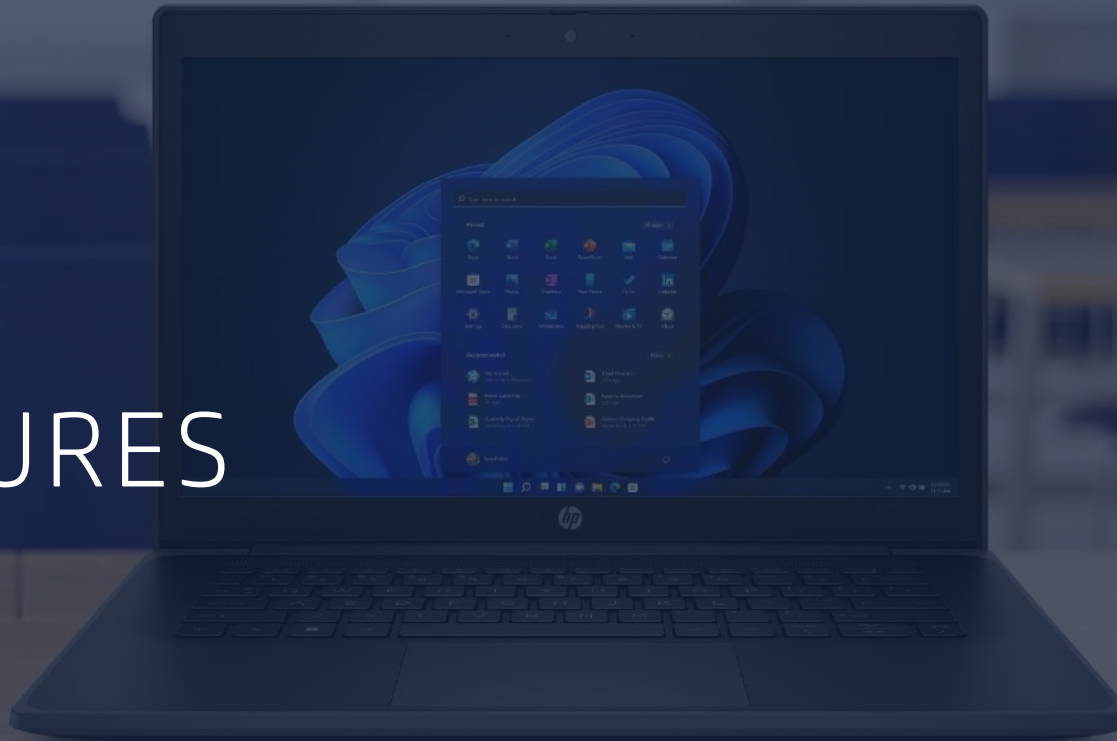
- Convertible design to use in tablet, presentation, and tent mode
- Active pen with rapid charging garage^{1,56} to take notes, fill out forms, or write email & chat responses
- Integrated webcam for video calls and second world-facing camera¹ to take pictures while viewing content onscreen.

PROTECTING PEOPLE AND DATA

- Metal battery cage to protect battery
- Simplified access to internal components through the bottom cover
- HP Wolf Security for Business⁸ to protect from cyber attacks
- Integrated HP Privacy Camera

HP PRO x360 FORTIS 11-INCH G9/G10

PRODUCT FEATURES



WHAT'S NEW

HP PRO x360
FORTIS 11-INCH G9/G10



DURABILITY AND DESIGN

- Enhanced anchored skirt keys⁴
- Greater durability testing⁴
- Strengthened internal design with metal-protected battery
- New optional water-resistant pen garage¹
- New color options (Jet Black, Jellyfish Blue). Not all colors available in all markets.

EQUIPPED FOR PRODUCTIVITY

- Next gen Intel® processor⁹
- Optional HP Slim Rechargeable Pen⁵⁶ (Charges in 20 seconds for 70 minutes of use⁵⁵) and optional built-in pen garage¹
- 250 nit panel¹⁰ for bright screen that is easy on the eyes
- Wi-Fi 6E² wireless LAN with MU-MIMO¹¹ for better connectivity (G10 only)
- Wireless 4G LTE³ connectivity helps expand connectivity and enhance security (G9 only)
- HP AI Noise Reduction⁵⁷ uses noise-filtering technology to enhance audio and video conferencing experience.

IT FRIENDLY MANAGEABILITY & SECURITY

- HP Sure Start¹² for self-healing protection after BIOS attacks
- HP Sure Admin¹³ to help manage BIOS remotely (G10 only)
- Simplified access to internal components through the bottom cover for better serviceability

HP PRO x360 FORTIS 11-INCH G9

Get right to the task at hand with the confidence that the ruggedized HP Pro x360 Fortis will keep up with you—however, wherever, whenever. This x360 features robust online collaboration and productivity tools to help complete your daily activities.



DURABILITY TO HELP REDUCE DOWNTIME

Protect your HP Pro x360 Fortis from daily wear and tear—helping reduce downtime and keep you purpose-focused. Built-in reinforcement helps prevent damage from spills⁵⁴ and drops for active days on-the-go.



EQUIPPED FOR PRODUCTIVITY

Manage tasks in any environment with a 360-degree hinge and optional world-facing camera.¹ Easily and confidently interact with content using the keyboard, the touchscreen, or the optional rechargeable pen with built-in garage.^{1,56}



IT-FRIENDLY MANAGEABILITY

Manage and protect your HP Pro x360 Fortis with easy-to-use manageability features¹⁴ and HP Wolf Security⁸. Help IT reduce hands-on serviceability, allowing more time for higher-level, strategic initiatives.



PN: TBD
Starting ILP: TBD



Windows 11



Latest Intel® multi-core processor⁹ with up to 8GB memory¹ and up to 64GB eMMC storage¹⁸



HP Easy Clean 2.0¹⁵ to allow you to clean your laptop without powering down



Optional embedded CAT9 WWAN³



Long battery life

HP PRO x360 FORTIS 11-INCH G10

Get right to the task at hand with the confidence that the ruggedized HP Pro x360 Fortis will keep up with you—however, wherever, whenever. This x360 features robust online collaboration and productivity tools to help complete your daily activities.



DURABILITY TO HELP REDUCE DOWNTIME

Protect your HP Pro x360 Fortis from daily wear and tear—reducing downtime and keeping you purpose-focused. Built-in reinforcement helps prevent damage from spills⁵⁴ and drops for active days on-the-go.



EQUIPPED FOR PRODUCTIVITY

Manage tasks in any environment with a 360-degree hinge and optional world-facing camera.¹ Easily and confidently interact with content using the keyboard, the touchscreen, or the optional rechargeable pen with built-in garage.^{1,56}



IT-FRIENDLY MANAGEABILITY

Manage and protect your HP Pro x360 Fortis with easy-to-use manageability features¹⁴ and HP Wolf Security⁸. Help IT reduce hands-on serviceability, allowing more time for higher-level, strategic initiatives.



PN: TBD
Starting ILP: TBD



Windows 11



Intel® 12th gen processor⁹ with up to 8GB memory¹ and up to 64GB eMMC storage¹⁸



HP Easy Clean 2.0¹⁵ to allow you to clean your laptop without powering down



Wi-Fi 6E wireless LAN² with MU-MIMO¹¹ and HP Extended Range Wireless LAN¹⁶



Long battery life

HP PRO x360 FORTIS 11-INCH G9/G10

PRODUCT WALKTHROUGH

TEXTURED SURFACE

Hides fingerprints and minor dirt smudges

ULTRALIGHT DESIGN

Starts from:
1.47kgs / 3.24lbs

CORNING® GORILLA® GLASS 3 DAMAGE-RESISTANT TOUCH SCREEN

Corning® strengthened glass for protection from damage

FAST CONNECTIONS

4G LTE³ (G9 only)
Wi-Fi 6E² (G10 only)
MU-MIMO¹¹
HP Extended Range Wireless LAN¹⁶
WWAN³ with internal SIM card slot (G9 only)

POWERFUL PROCESSING

G9: Intel® Celeron® DC & QC processors and Intel® Pentium® processors⁹
G10: Intel® 12th Gen Core™ i3/i5 processors⁹

HD WEBCAM

Dual array microphone+ HD webcam and HP Privacy Camera

AI-BASED NOISE REDUCTION⁵⁷

Noise-filtering technology to enhance audio and video conferencing experience.

BUILT TO PERFORM

Up to 8 GB RAM¹ and
64 GB eMMC¹⁸, up to 256GB SSD¹⁷ storage options

GARAGED PEN

Optional HP Slim Rechargeable Pen,
stored in pen garage on unit^{1, 56}

DURABLE KEYBOARD

Enhanced pick-resistant anchored skirt keyboard, spill-resistant protection⁵⁴.
Wipeable with household wipes⁷.

2nd WEBCAM¹

Optional 5MP autofocus world-facing Webcam



SACRIFICE NOTHING

SLIM DESIGN WITH PLENTY OF PORT SPACE

**BARREL TYPE
POWER
CONNECTOR**

RJ-45 PORT

HDMI 1.4b

USB-A 3.1 GEN 1
SuperSpeed USB
Type-A 5 Gbps
signaling rate port

USB-C®
SuperSpeed USB Type-C® 5 Gbps signaling
rate port (Power delivery, DisplayPort™)

Left profile

Right profile

**3.5MM
AUDIO
JACK/MIC
COMBO**

USB-A 3.1 GEN 1
SuperSpeed USB
Type-A 5 Gbps
signaling rate port

**NANO
LOCK
SLOT**

HP PRO x360 FORTIS 11-INCH G9/G10

PRIVACY & SECURITY



PROTECTED BY HP WOLF SECURITY¹³

EQUIPPING YOU WITH PC RESILIENCY AND PROTECTION



HP WOLF SECURITY

SECURING TODAY'S USERS

ADDRESSING THREATS AIMED AT
DISTRIBUTED USERS

SECURING ENDPOINTS AT EVERY LEVEL

AGAINST EVOLVING MODERN THREATS



HP Pro x360 Fortis
11-Inch G9/G10

ABOVE THE OS

HP Management Integration Kit¹⁴
HP Privacy Camera

IN THE OS

HP Wolf Security Console²³
HP Sure Sense¹⁹
HP Sure Click²⁰ (G10 only)
HP BIOSphere Gen6²⁵

ADVANCED SECURITY OPTIONS
HP Wolf Pro Security Edition²¹
HP Wolf Pro Security Service²²
HP Wolf Enterprise Security²⁴

BELOW THE OS

HP Sure Start Gen7¹²
HP Sure Admin¹³ (G10 only)

PC SECURITY TO ENABLE CONTINUITY



HP WOLF SECURITY



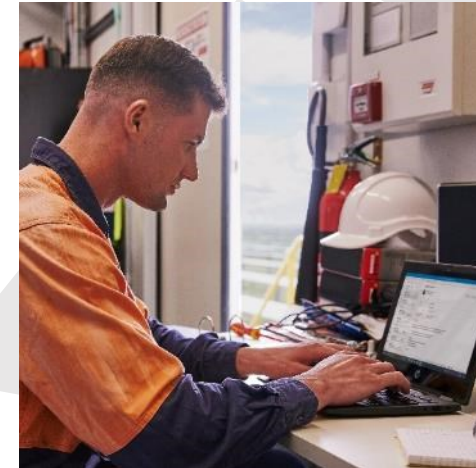
SELF-HEALING FIRMWARE

Avoid potential downtime caused by firmware attacks or corruption with HP Sure Start¹², the world's first self-healing BIOS that restarts with a safe copy of the BIOS if an attack or corruption is detected.



WORK WITHOUT WORRY

HP Wolf Security⁸ provides resilient layers of security, built on Zero Trust principles, that allow you to work with confidence and relieve you from acting as a "security sensor."



SECURE MANAGEABILITY

HP Sure Admin¹³ allows IT administrators to securely manage BIOS settings over the network.
(G10 only)

SECURITY BY DEFAULT

WINDOWS 11 DELIVERS POWERFUL
PROTECTION FROM CHIP TO CLOUD

In Windows 11, hardware and software security work together to help keep users, data, and devices protected.

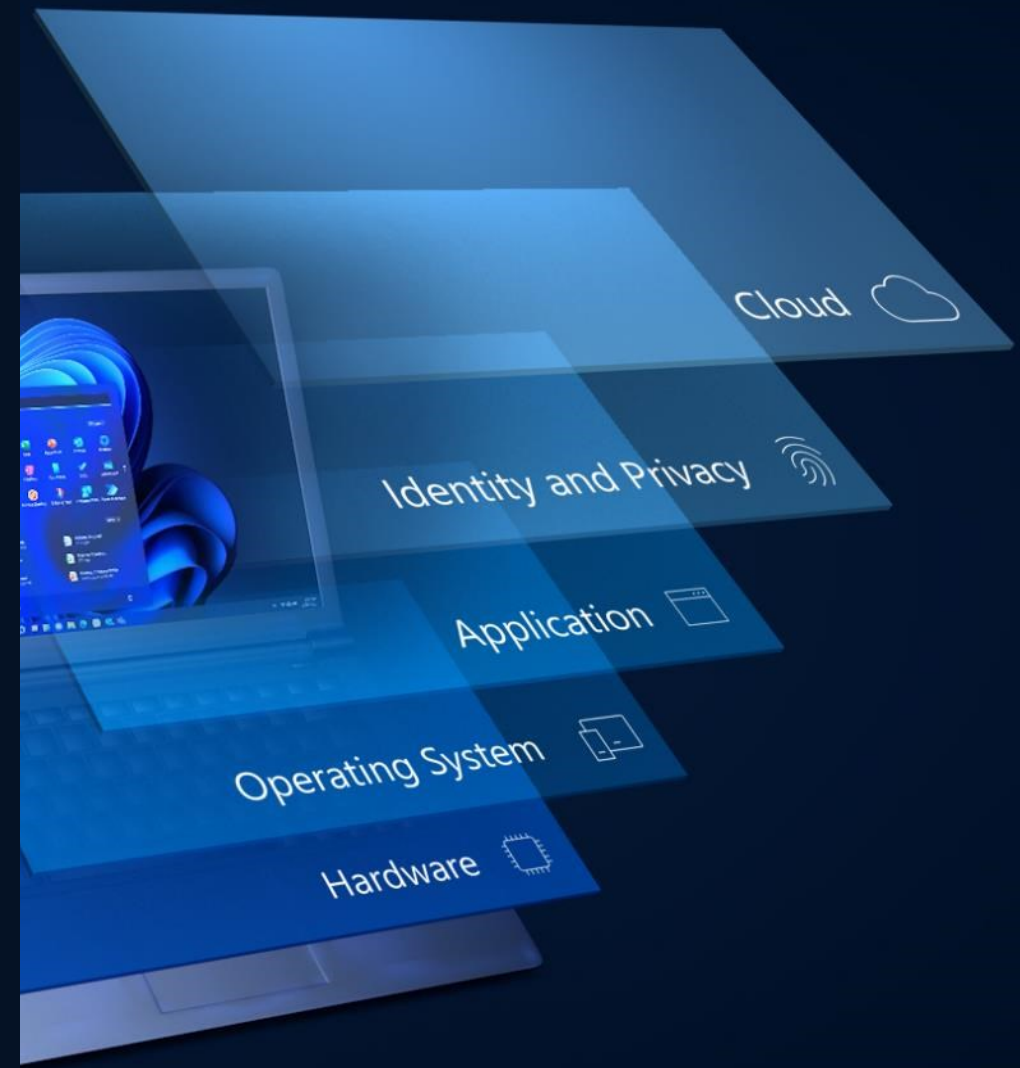
Protects against threats by separating hardware from software with hardware root-of-trust, for powerful security from the start

Protect the OS against unauthorized access to critical data

Delivers robust application security and prevents access to unverified code

Protects user identities with passwordless security

Extends security to the cloud to help protect devices, data, apps, and identities from anywhere



HP PRO x360 FORTIS 11-INCH G9/G10

PRODUCT EXPERIENCES



EXPLORE WITH DUAL CAMERAS

Unleash creativity with multimedia tools that let you record, stream, and chat with the user-facing camera.

See what's recording onscreen and capture photos with the optional auto-focus world-facing 5MP 2nd camera.¹



MAKE POWERFUL CONNECTIONS

G9: WIRELESS 4G LTE CONNECTIVITY

Connect reliably from almost anywhere with the optional embedded CAT9 WWAN.³ Highly reliable advanced network connectivity helps expand connectivity and enhance security.

G10: ADVANCED WIRELESS CONNECTIVITY

Connect reliably, even in crowded wireless networks, with a fast, reliable wireless connection. This laptop's Wi-Fi 6E² wireless LAN4 module supports Bluetooth® technology and comes with MU-MIMO¹¹ and HP Extended Wireless LAN.¹⁶



ALWAYS-READY WIRELESS RECHARGEABLE PEN

POWER UP IN THE GARAGE

Recharge quickly and keep the pen close at hand with an integrated water-resistant garage on the keyboard.¹

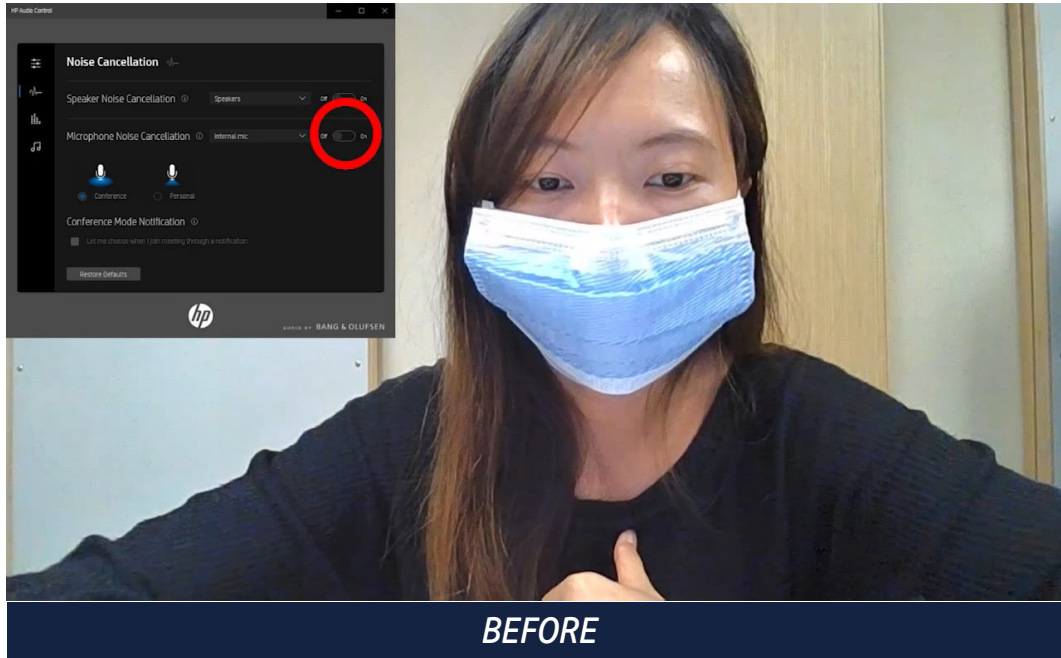


HP SLIM RECHARGEABLE PEN

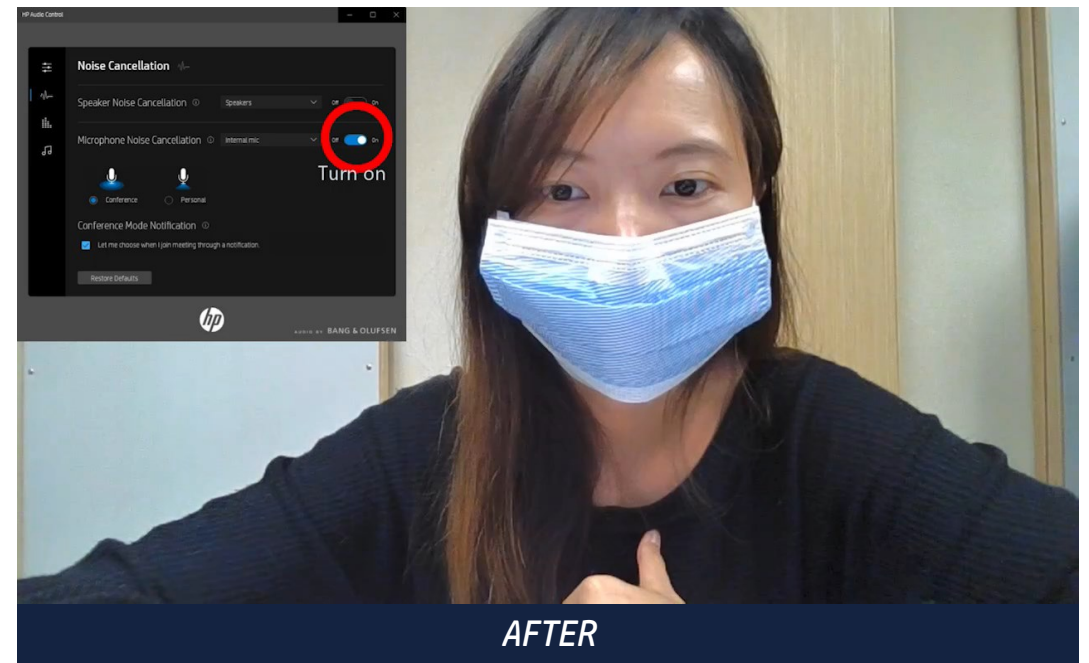
Easily jot notes and capture data and other information through natural writing with an optional digital pen.⁵⁶

BE HEARD LOUD AND CLEAR

With HP AI-based noise reduction 2.0⁵⁷



People say I sound muffled on conference calls when I'm wearing a mask.



People can hear me clearly even when I'm wearing a mask.

FILTERS INBOUND & OUTBOUND NOISE

AI-based advanced noise reduction filters my background noise and yours for an enhanced conference call experience.

CHARGED AND READY TO WORK



TAKE ON YOUR DAY WITHOUT WORRYING ABOUT RECHARGING.
With long battery life, the HP Pro x360 Fortis keeps working so you can work and play—untethered.



BATTERY PROTECTION
Help keep your battery protected from damage with an internal metal plate overlay.



FLEXIBLE CHARGING OPTIONS
Get the flexibility to charge your laptop with the traditional barrel-type adapter or optional USB-C® charger.²⁶



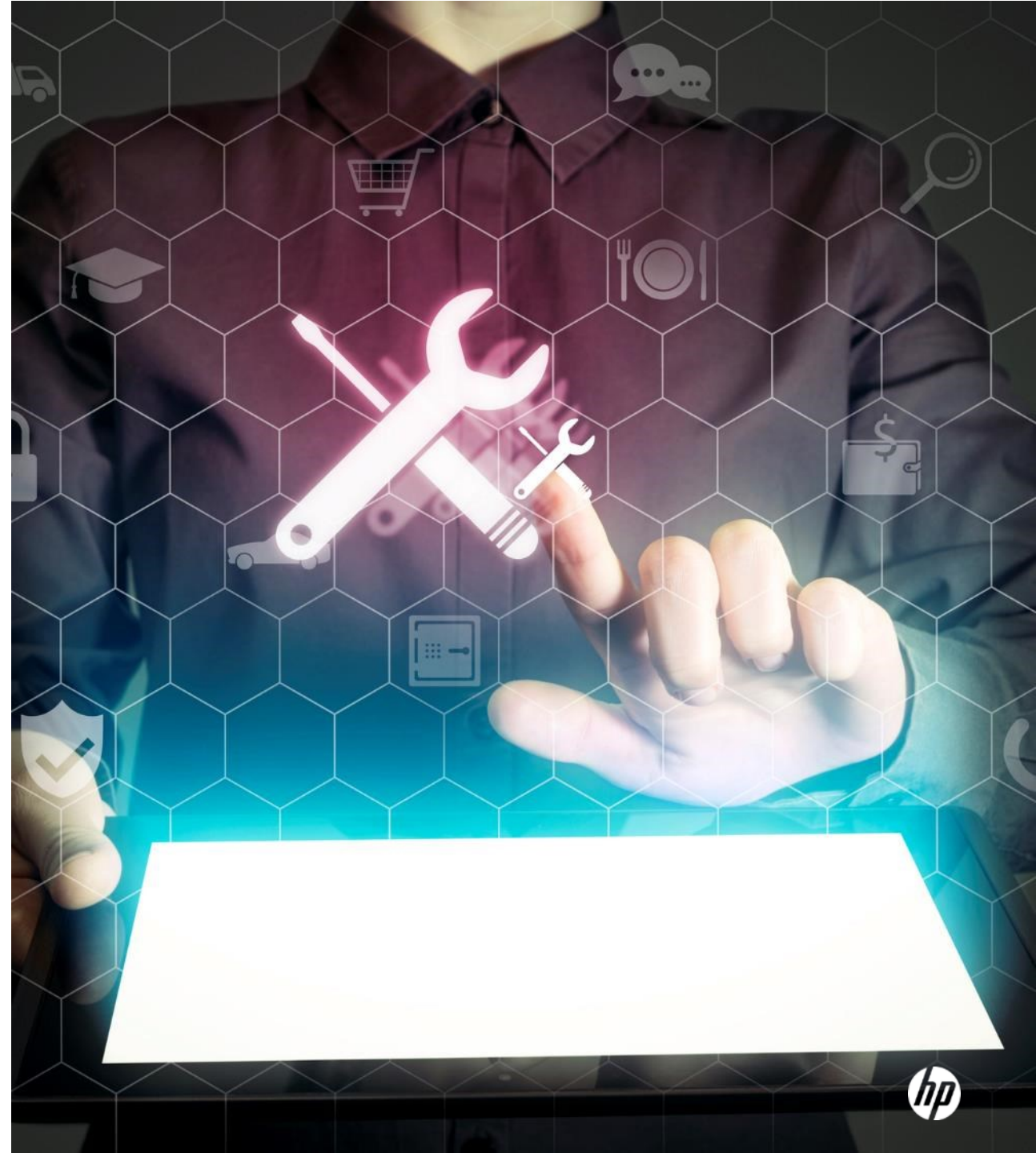
EFFORTLESS SERVICEABILITY

EASY ACCESS SERVICE FOR YOUR x360

Regular maintenance and service of your x360 helps prolong the life of the device. Service professionals can **easily open** and **access the device from the bottom**.

FAST AND RELIABLE IMAGE UPDATES

Easily push image updates to your PC fleet with a commonly used RJ-45 port. No adapter needed. And help speed up the basics of management with HP Manageability Integration Kit.¹⁴



TOUGH, RESILIENT DESIGN

BUILT TO SURVIVE BUMPS AND DROPS



CO-MOLDED RUBBER TRIM

Provide a laptop that can survive drops up to 122 cm (48.03 in).⁵ Absorb shocks from accidental bumps and drops with tightly bonded, easy-to-grip co-molded rubber trim—protecting your technology investment.⁴

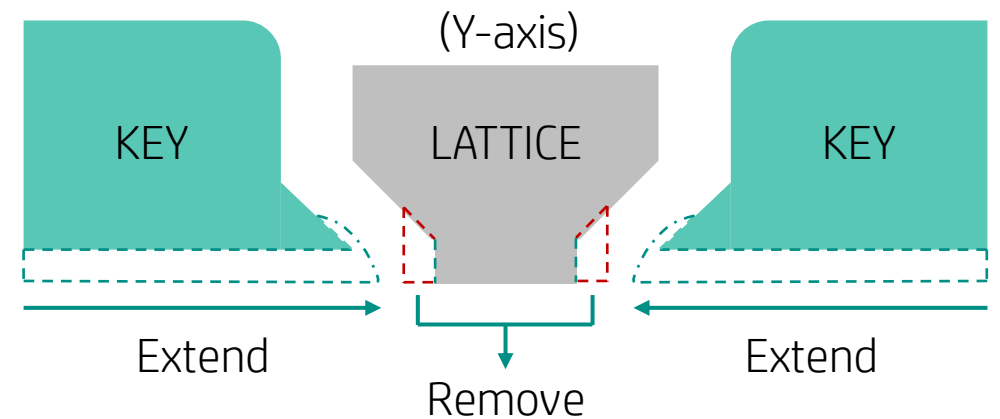


REINFORCED PORTS

Plugging and unplugging power and USB ports throughout the day can cause stress and strain. **The reinforced ports are designed to hold up to frequent plugging and unplugging** over time and can withstand drops—helping reduce service costs.⁶

DURABLE KEYBOARD

Reduce risk of damage to keyboards with **pick resistant, full-skirted anchored keys**. Coupled with an extra layer of protection under the keys, this sturdy keyboard resists spills up to 350ml (11.8 oz).⁵⁴





DURABLE CONSTRUCTION

BUILT TO LAST

UNDERGOES
19

***MIL-STD 810H
TESTS⁶***

120k
HOURS

***HP TOTAL TEST
PROCESS⁴***

The real challenge of building thin, light, and powerful is to remember the customer and where this device will be used – in a mobile environment – a *moving* environment.

Quality can't be sacrificed for anything.

KEEP IT CLEAN



Your device can be wiped down repeatedly with common household cleaning wipes.⁷

HP EASY CLEAN 2.0¹⁵

Disables the touchscreen, keyboard, and clickpad at the touch of a button to clean without powering off.






HELP PROTECT OUR SHARED FUTURE



HP IS COMMITTED TO DELIVERING
THE WORLD'S MOST SUSTAINABLE
PC PORTFOLIO²⁸



HP Pro x360 Fortis 11-Inch G9/G10

BEFORE USE	Keycaps made from 30% post-consumer recycled plastics (DVDs) ⁴³	✓
	Speaker box with ocean-bound plastic ⁴⁴	✓
	100% sustainably sourced or recycled packaging ⁴⁵	✓
	Bulk packaging ⁴⁶	✓
DURING USE	EPEAT® Gold registered in the US ²⁷	
	 ENERGY STAR® Rated	✓
	 TCO Certified, Gen 9	✓
	Undergoes 19 MIL-STD 810 ⁶ tested for durability	✓
	Sanitizable ⁷	✓
AFTER USE	HP Planet Partners	✓
	HP Device Recovery ²⁹	✓

HP PROBOOK x360 11-INCH G7 EE vs HP PRO x360 FORTIS 11-INCH G9 GEN-TO-GEN COMPARISON

COMPONENT	HP PROBOOK x360 11-INCH G7 EE	HP PRO x360 FORTIS 11-INCH G9
ID/ MATERIAL	Plastic lid, keyboard deck and bottom cover; 360° opening angle Jet Black & Nautical Teal	Plastic lid, keyboard deck and bottom cover; 360° opening angle Jet Black & Jellyfish Blue (not all colors available in all markets)
PROCESSORS	Intel® Celeron® DC & QC, Pentium® processors ⁹	Intel® Celeron® DC & QC, Pentium® processors ⁹
DIMENSION/WEIGHT	30.0 x 20.53 x 2.12 cm; 11.69 x 8.08 x 0.83 in (Dimensions may vary by configuration) Starting at 1.47 kg; 3.24 lb (Weight will vary by configuration)	29.7 x 20.37 x 2.12 cm; 11.69 x 8.02 x 0.83 in (Dimensions may vary by configuration) Starting at 1.47 kg; 3.24 lb (Weight will vary by configuration)
DISPLAY OPTIONS	11.6" diagonal HD (1366x768) Anti-glare, 220 nits ⁵ , 45% NTSC, SVA eDP WLED-backlit, touch screen; 11.6" diagonal HD (1366x768) Anti-glare, 220 nits ⁵ , 50% NTSC, UWVA eDP WLED-backlit, touch screen	11.6" diagonal HD (1366x768) BrightView, 250 nits¹⁰ , 45% NTSC, SVA eDP WLED-backlit, touch screen; 11.6" diagonal HD (1366x768) BrightView, 250 nits¹⁰ , 50% NTSC, UWVA eDP WLED-backlit, touch screen
GRAPHICS	Integrated: Intel® UHD Graphics	Integrated: Intel® UHD Graphics
MEMORY	Up to 8 GB LPDDR4X-4266 SDRAM onboard memory	Up to 8 GB DDR4-3200 SDRAM onboard memory ¹
STORAGE	128 GB PCIe® Gen3x2 NVMe™ M.2 SSD TLC; 256 GB PCIe® NVMe™ Value M.2 SSD; 64 GB eMMC (onboard) ¹²	128 GB/ 256 GB PCIe® NVMe™ Value M.2 SSD; 64 GB eMMC (onboard) ^{17, 18}
KEYBOARD & PAD	Pick resistant anchored skirt keyboard, spill-resistant protection; Clickpad with multi-touch gesture support	Enhanced pick resistant anchored skirt keyboard, spill-resistant protection ⁵⁴ ; HP Programmable key ; Clickpad with multi-touch gesture support
I/O	2 SuperSpeed USB Type-A 5 Gbps signaling rate port; 1 SuperSpeed USB Type-C® 5 Gbps signaling rate port (USB Power Delivery, Alt-mode DisplayPort™ 1.2); 1 headphone/microphone combo; 1 HDMI 1.4b; 1 RJ-45; 1 AC power; Active Light; optional HP Pro Pen (AES 1.0; Battery AAA)	2 SuperSpeed USB Type-A 5 Gbps signaling rate port; 1 SuperSpeed USB Type-C® 5 Gbps signaling rate port (USB Power Delivery, Alt-mode DisplayPort™ 1.2); 1 headphone/microphone combo; 1 HDMI 1.4b; 1 RJ-45; 1 AC power; Active Light; optional Pen Garage & HP Slim Rechargeable Pen^{1,56} (AES 1.0; 20s, ~75-80min)
CONNECTIVITY	WLAN: Intel® Wi-Fi 6 ⁹ AX201 802.11ax (2x2) 42 and Bluetooth® 5 Combo, non-vPro®; Intel® 9560 802.11ac (2x2) and Bluetooth® 5 Combo, non-vPro®	WLAN: Intel® Wi-Fi 6 ⁴⁷ AX201 802.11ax (2x2) and Bluetooth® 5 Combo, non-vPro®; Intel® 9560 802.11ac (2x2) and Bluetooth® 5 Combo, non-vPro®; WWAN: Intel® XMM 7360 LTE-Advanced Cat 9³
AUDIO & CAMERA	Dual stereo speakers, dual array microphone; 720p HD camera; Optional 5MP World-facing 2nd Camera	Dual stereo speakers, dual array microphone; HP AI Noise Reduction⁵⁷ 720p HD camera; Optional 5MP World-facing Wide Field of View 2nd Camera ¹
BATTERY & ADAPTERS	3 cell Li-Polymer 48Whr, Long Life Battery ¹¹ ; 65 W/45 W External AC power adapter; 45 W USB Type-C® adapter	3 cell Li-Polymer 42Whr⁴⁸ , Long Life Battery; 65 W/45 W External AC power adapter; 45 W USB Type-C® adapter
SECURITY HARDWARE	Discrete TPM 2.0, K-Lock Slot ¹⁶ , HP Privacy Camera ¹⁷ on Primary Camera	Discrete TPM 2.0, K-Lock Slot ⁴⁹ , HP Privacy Camera on Primary Camera
SECURITY SOFTWARE	HP Sure Start Lite, HP Sure Sense ¹⁸ , HP Easy Clean ¹⁹ , HP BIOSphere ²⁰ , Absolute persistence module, HP TPM Configuration Utility	HP Sure Start¹² , HP Sure Sense ¹⁹ , HP Easy Clean ¹⁵ , HP BIOSphere ²⁵ , Absolute persistence module, HP TPM Configuration Utility
MANAGEABILITY	HP Smart Support ²² , HP Image Assistant, HP Manageability Integration Kit (MIK) ²³ , HP Power Manager, HP Support Assistant	HP Smart Support ³¹ , HP Image Assistant, HP Manageability Integration Kit (MIK) ¹⁴ HP Power Manager, HP Support Assistant ⁵³
PRODUCTIVITY SOFTWARE	HP Mac Address Manager, myHP ²⁶ , HP School Pack	HP Mac Address Manager, HP QuickDrop⁵⁰ , myHP ⁵¹ , HP School Pack ³³
DURABILITY	19 MIL-STD-810H Tests ²⁷ , HP Total Test Process ⁴ , Sanitizable with household wipes up to 1000 cycles of disinfection ²⁸ , Tumble Test with 200 cycles ³²	19 MIL-STD-810 Tests ⁶ , HP Total Test Process ⁴ , Sanitizable with household wipes up to 1000 cycles of disinfection ⁷ , Tumble Test with 1000 cycles⁵⁴
SERVICEABILITY	-	Self-capturing screws on D-cover; IT replaceable: SSD, WLAN, WWAN, WWAN SIM ⁵²



HP PROBOOK x360 11-INCH G6 EE & HP PRO x360 FORTIS 11-INCH G10 GEN-TO-GEN COMPARISON

COMPONENT	HP PROBOOK x360 11-INCH G6 EE	HP PRO x360 FORTIS-11 INCH G10
ID/ MATERIAL	Plastic lid, keyboard deck and bottom cover; 360° opening angle Chalkboard Gray & Dusk Blue	Plastic lid, keyboard deck and bottom cover; 360° opening angle Jet Black & Jellyfish Blue (not all colors available in all markets)
PROCESSORS	Intel® Amber Lake-Y, Core i3/i5 processors ¹	Intel® 12th Gen Core i3/i5 processors⁹
DIMENSION/WEIGHT	30.0 x 20.53 x 2.12 cm; 11.69 x 8.08 x 0.83 in (Dimensions may vary by configuration) Starting at 1.44 kg; 3.16 lb (Weight will vary by configuration)	29.7 x 20.37 x 2.12 cm; 11.69 x 8.02 x 0.83 in (Dimensions may vary by configuration) Starting at 1.51 kg; 3.33 lb (Weight will vary by configuration)
DISPLAY OPTIONS	11.6" diagonal HD (1366x768) Anti-glare, 220 nits ⁵ , 45% NTSC, SVA eDP WLED-backlit, touch screen; 11.6" diagonal HD (1366x768) Anti-glare, 220 nits ⁵ , 50% NTSC, UWVA eDP WLED-backlit, touch screen	11.6" diagonal HD (1366x768) BrightView, 250 nits¹⁰ , 45% NTSC, SVA eDP WLED-backlit, touch screen; 11.6" diagonal HD (1366x768) BrightView, 250 nits¹⁰ , 50% NTSC, UWVA eDP WLED-backlit, touch screen ⁹
GRAPHICS	Integrated: Intel® UHD Graphics ³⁰	Integrated: Intel® UHD Graphics
MEMORY	Up to 8 GB LPDDR4-4266 SDRAM onboard memory	Up to 8 GB LPDDR4X -4266 SDRAM onboard memory ¹
STORAGE	128/256 GB SATA M.2 SSD TLC; 64GB eMMC (onboard) ¹²	128 GB/ 256 GB PCIe® NVMe™ Value M.2 SSD; 64GB eMMC (onboard) ^{17, 18}
KEYBOARD & PAD	Pick resistant anchored skirt keyboard, spill-resistant protection; Clickpad with multi-touch gesture support	Enhanced pick resistant anchored skirt keyboard, spill-resistant protection ⁵⁴ ; HP Programmable key ; Clickpad with multi-touch gesture support
I/O	2 SuperSpeed USB Type-A 5 Gbps signaling rate port; 1 SuperSpeed USB Type-C® 5 Gbps signaling rate port (USB Power Delivery, Alt-mode DisplayPort™ 1.2); 1 headphone/microphone combo; 1 HDMI 1.4b; 1 RJ-45; 1 AC power Active Light; optional HP Pro Pen (AES 1.0; Battery AAA)	2 SuperSpeed USB Type-A 5 Gbps signaling rate port; 1 SuperSpeed USB Type-C® 5 Gbps signaling rate port (USB Power Delivery, Alt-mode DisplayPort™ 1.2); 1 headphone/microphone combo; 1 HDMI 1.4b; 1 RJ-45; 1 AC power; Active Light; optional Pen Garage & HP Slim Rechargeable Pen^{1,56} (AES 1.0; 20s, ~75-80min)
CONNECTIVITY	WLAN: Intel® Wi-Fi 6 ⁹ AX200 802.11ax (2x2) 42 and Bluetooth® 5 Combo, non-vPro™; Intel® 9560 802.11ac (2x2) and Bluetooth® 5 Combo, non-vPro™	WLAN: Intel® AX211 Wi-Fi® 6E² and Bluetooth® 5.2 Combo, non-vPro®; Intel® 9560 802.11ac (2x2) and Bluetooth® 5 Combo, non-vPro®
AUDIO & CAMERA	Dual stereo speakers, dual array microphone; 720p HD camera; Optional 5MP World-facing 2nd Camera	Dual stereo speakers, dual array microphone; HP AI Noise Reduction⁵⁷ 720p HD camera; Optional 5MP World-facing Wide Field of View 2nd Camera ¹
BATTERY & ADAPTERS	3 cell Li-Polymer 48Whr, Long Life Battery ¹¹ ; 65 W/45 W External AC power adapter; 45 W USB Type-C® adapter	3 cell Li-Polymer 42Whr⁴⁸ , Long Life Battery; 65 W/45 W External AC power adapter; 45 W USB Type-C® adapter
SECURITY HARDWARE	Discrete TPM 2.0, K-Lock Slot ¹⁶	Discrete TPM 2.0, K-Lock Slot ⁴⁹ , HP Privacy Camera on Primary Camera
SECURITY SOFTWARE	HP TPM Configuration Utility	HP Sure Start¹², HP Sure Sense¹⁹, HP Sure Click²⁰, HP Sure Admin¹³, HP Easy Clean¹⁵, HP BIOSphere²⁵, Absolute persistence module , HP TPM Configuration Utility, HP Wolf Security for Business⁸
MANAGEABILITY	HP Support Assistant	HP Smart Support³¹, HP Image Assistant, HP Manageability Integration Kit (MIK)¹⁴, HP Power Manager , HP Support Assistant ⁵³
PRODUCTIVITY SOFTWARE	-	HP Mac Address Manager, HP QuickDrop⁵⁰, myHP⁵¹, HP School Pack³³
DURABILITY	13 MIL-STD-810G Tests ³⁴	19 MIL-STD-810 Tests⁶, HP Total Test Process⁴, Sanitizable with household wipes up to 1000 cycles of disinfection⁷, Tumble Test with 1000 cycles⁵⁴
SERVICEABILITY	-	Self-capturing screws on D-cover; IT replaceable: SSD, WLAN

HP FORTIS PORTFOLIO OVERVIEW



PRO x360 FORTIS 11-INCH G9/G10		PROBOOK FORTIS 14-INCH G9/G10		FORTIS 14-INCH G10 CHROMEBOOK		FORTIS 11-INCH G9 Q CHROMBOOK	
Microsoft®				Chrome			
Intel®		Intel®		Intel®		Qualcomm®	
Ultimate flexibility and interactivity		Keep connected almost anywhere, anytime		Keep connected almost anywhere, anytime		Keep connected almost anywhere, anytime	
Designed with 5 modes, active inking pen with charging garage ^{1,56} and a 2nd world facing camera ¹ for enhanced collaboration. Connect reliably with Wi-fi® & now LTE capabilities ³ (LTE on G9 only).		Larger 14" diagonal screen for multi- tasking and ability to connect almost anywhere with Wi-fi® & now LTE capabilities ³ (LTE on G9 only).		Easily work in the cloud with the larger 14" diagonal screen for multi-tasking and ability to connect almost anywhere with Wi-fi® & now LTE capabilities . ³ Rugged chassis & full-skirted anchored keyboard to withstand rigors of daily use, ⁴		Powered by a Qualcomm processor ⁴¹ . Connect reliably with Wi-fi® & now LTE capabilities ³ and an embedded eSim card ⁴² HP Privacy Camera physically blocks the lens of your camera, providing peace of mind.	

HP PRO x360 FORTIS 11-INCH G9/G10
BEYOND THE BOX

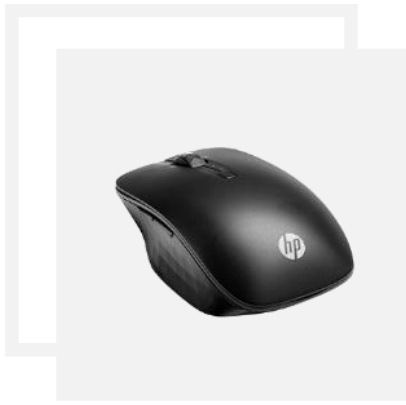


COMPLETE THE SOLUTION

HP PRO x360 FORTIS 11-INCH G9/G10



HP USB-C
DOCK G5



HP BLUETOOTH
TRAVEL MOUSE



HP NANO-KEYED
CABLE LOCK



HP MOBILITY
11.6" CASE



HP ALWAYS-ON
11.6" BLACK CASE



ENHANCING THE CLASSROOM WITH

DIGITAL TOOLS FOR LEARNING

HP SCHOOL PACK 4.5³³



Out-of-the-box education software and tools that support innovative, collaborative, and engaging learning.

HP SCHOOL PACK 4.5³³



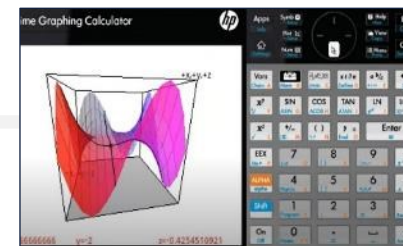
HP CLASSROOM MANAGER 4.0³⁴ Student Edition

Enables the teachers to determine when and how devices are used in a classroom



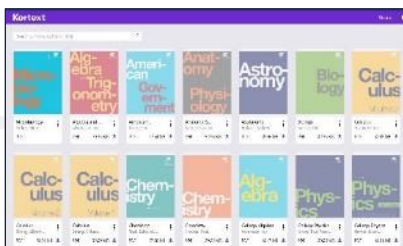
bulb³⁵ DIGITAL PORTFOLIO

For students and educators to create, share, and showcase their work for life



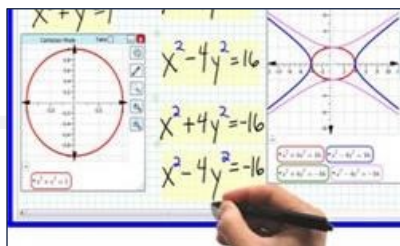
HP PRIME GRAPHING CALCULATOR PRO^{36, 37}

An integrated graphing calculator app that enables students to solve problems, learn, and explore



KORTEXT E-TEXTBOOK³⁸ READER & BOOKSTORE

Enables students to access e-textbooks from top publishers around the world



FLUID MATHTM ³⁹

Enables teachers & students to easily create, solve, graph and animate math and physics problems in their own hand-writing on screen



VICTORYXRTM ⁴⁰ AUGMENTED REALITY

Brings learning to life for students and teachers using augmented reality.

KEEPING THE CLASS ON TASK

WITH HP CLASSROOM MANAGER 4.0³⁴



Cloud version available initially in US.



WHAT TEACHERS LOVE

Manage student devices

Empowering teachers to determine when and how devices are used in the classroom

Harness tech, not compete with it

Teachers can gauge student understanding real-time and adapt their lessons.

Keep students focused and engaged

Teachers can give students individual support via private chat.



THANK YOU

DISCLAIMERS

1. Optional feature that must be configured at the time of purchase.
2. Wi-Fi 6E requires a Wi-Fi 6E router, sold separately, to function in the 6GHz band. Availability of public wireless access points limited. Wi-Fi 6E is backwards compatible with prior 802.11 specs. And available in countries where Wi-Fi 6E is supported.
3. WWAN is an optional feature, requires factory configuration and separately purchased service contract. Check with service provider for coverage and availability in your area. 4G LTE not available on all products, in all regions.
4. HP Total Test Process testing is not a guarantee of future performance under these test conditions. Any accidental damage requires an optional HP Accidental Damage Protection Care Pack.
5. 122 cm test on plywood and 76 cm test on concrete. Drop test is not a guarantee of future performance under these test conditions. Any accidental damage requires an optional HP Accidental Damage Protection Care Pack.
6. MIL-STD testing is not intended to demonstrate fitness for U.S. Department of Defense contract requirements or for military use. Test results are not a guarantee of future performance under these test conditions. Accidental damage requires an optional HP Accidental Damage Protection Care Pack
7. See wipe manufacturer's instructions for disinfecting and the HP cleaning guide for HP tested wipe solutions at How to Sanitize Your HP Device Whitepaper: <https://h20195.www2.hp.com/v2/GetDocument.aspx?docname=4AA7-7610ENW>.
8. HP Wolf Security for Business requires Windows 10 or higher, includes various HP security features and is available on HP Pro, Elite, Workstation, and RPOS products. See product details for included security features and OS requirements.
9. Multicore is designed to improve performance of certain software products. Not all customers or software applications will necessarily benefit from use of this technology. Performance and clock frequency will vary depending on application workload and your hardware and software configurations. Intel's numbering, branding and/or naming is not a measurement of higher performance.
10. Touch will reduce actual brightness.
11. Multiple-Input Multiple-Output (MU-MIMO) is a wireless technology that uses multiple transmitters and receivers to enhance data transfer. MIMO requires a MU-MIMO router, sold separately.
12. HP Sure Start Gen7 is available on select HP PCs and requires Windows 10 or higher.
13. HP Sure Admin requires Windows 10 or higher, HP BIOS, HP Manageability Integration Kit from <http://www.hp.com/go/clientmanagement> and HP Sure Admin Local Access Authenticator smartphone app from the Android or Apple store.
14. HP Manageability Integration Kit can be downloaded from <http://www.hp.com/go/clientmanagement>.
15. HP Easy Clean 2.0 requires Windows 10 RS3 or higher and will disable the keyboard, display and touchpad only. Ports are not disabled. And HP Easy Clean disables computer touchscreen for a set amount of time to allow cleaning all surfaces of the device. See user guide for cleaning instructions.
16. Based on internal testing vs. previous generation product with 802.11ac wireless LAN module.
17. For storage drives, GB = 1 billion bytes. TB = 1 trillion bytes. Actual formatted capacity is less. Up to 30GB of disk is reserved for system recovery software.
18. Up to 64 GB is an optional feature that must be configured at purchase. For storage drives, GB = 1 billion bytes. Actual formatted capacity is less. Up to 8.1 GB is not user accessible.
19. HP Sure Sense is available on select HP PCs and is not available with Windows 10 Home.
20. HP Sure Click requires Windows 10 and higher. See https://bit.ly/2PrLT6A_SureClick for complete details.
21. HP Wolf Pro Security Edition is available preloaded on select SKUs and, depending on the HP product purchased, includes a paid 1-year or 3-year license. The HP Wolf Pro Security Edition software is licensed under the license terms of the HP Wolf Security Software - End-User license Agreement (EULA) that can be found at: https://support.hp.com/us-en/document/ish_3875769-3873014-16 as that EULA is modified by the following: "7. Term. Unless otherwise terminated earlier pursuant to the terms contained in this EULA, the license for the HP Wolf Pro Security Edition is effective upon activation and will continue for either a twelve (12) month or thirty-six (36) month license term ("Initial Term"). At the end of the Initial Term you may either (a) purchase a renewal license for the HP Wolf Pro Security Edition from HP.com, HP Sales or an HP Channel Partner, or (b) continue using a limited version of the threat containment, malware prevention, and credential protection technology at no additional cost with no future software updates or HP Support.
22. HP Wolf Pro Security Service is sold separately. For full system requirements, please visit <http://www.hpdaas.com/requirements>. HP services are governed by the applicable HP terms and conditions of service provided or indicated to Customer at the time of purchase. Customer may have additional statutory rights according to applicable local laws, and such rights are not in any way affected by the HP terms and conditions of service or the HP Limited Warranty provided with your HP Product. For full system requirements, please visit www.hpdaas.com/requirements
23. HP Wolf Security Console requires Windows and is available on the select HP Elite and Pro PCs.
24. HP Sure Click Enterprise is sold separately and requires Windows 8 or 10 and Microsoft Internet Explorer, Google Chrome, Chromium or Firefox are supported. Supported attachments include Microsoft Office (Word, Excel, PowerPoint) and PDF files, when Microsoft Office or Adobe Acrobat are installed.
25. HP BIOSphere Gen6 requires Windows 10 and is available on select HP Pro and Elite PCs. Features may vary depending on the platform and configurations.
26. Device can be configured with either the barrel adapter or the USB-C® adapter at time of purchase.
27. Based on US EPEAT® registration according to IEEE 1680.1-2018 EPEAT®. EPEAT® status varies by country. Visit www.epeat.net for more information
28. Applies to HP PCs, Workstations and Displays manufactured after January 2019. Based on most Gold and Silver EPEAT® registrations by meeting all required criteria and achieving 50-74% of the optional points for EPEAT® Silver and 75-100% of the optional points for EPEAT® Gold according to IEEE 1680.1-2018 EPEAT®. Status varies by country. Visit www.epeat.net for more information.
29. HP Services are sold separately. HP Services are governed by the applicable HP terms and conditions of service provided or indicated to Customer at the time of purchase. Customer may have additional statutory rights according to applicable local laws, and such rights are not in any way affected by the HP terms and conditions of service or the HP Limited Warranty provided with your HP Product.
30. N/A



DISCLAIMERS

31. HP Smart Support automatically collects the telemetry necessary upon initial boot of the product to deliver device-level configuration data and health insights and is available preinstalled on select products, or it can be downloaded. For more information about how to enable HP Smart Support or to download, please visit <http://www.hp.com/smart-support>.
32. The New Frontier Of Endpoint Management: Forrester November 2020
33. Some apps require purchase.
34. HP Classroom Manager for Teachers is required and sold separately for control and device locking from the teacher's Windows desktop console; no locking and control functionality originates from HP Classroom Manager for Student.
35. Bulb Digital Portfolio includes full version 6-month trial. After 6 months, the number of published pages is limited to 10 and storage to 2GB. To retain full functionality, subscription required prior to the end of the 6-month trial period.
36. HP Prime Graphing Calculator Pro included with HP School Pack and may be purchased separately for other devices from the Windows, Android, or Apple Store.
37. HP Prime Graphing Calculator cannot be reinstalled if customer removes or creates a custom image
38. Internet access required and e-textbooks sold separately.
39. Fluid Math 1-year subscription included. Additional years available for purchase from Fluidity.
40. Customer is entitled to 1 free augmented reality course including printable workbook, additional courses and workbooks must be purchased separately.
41. Multi-core is designed to improve performance of certain software products. Not all customers or software applications will necessarily benefit from use of this technology. Performance will vary depending on your hardware and software configurations. Qualcomm's numbering is not a measurement of clock speed.
42. Optional feature that must be configured at the time of purchase and requires external SIM card, not included and must be purchased separately.
43. Recycled plastic content percentage is based on the definition set in the IEEE 1680.1-2018 standard.
44. Laptop speaker enclosure contains 5% ocean bound plastic by weight.
45. 100% outer box packaging made from sustainably sourced certified and recycled fibers. Fiber cushions made from 100% recycled wood fiber and organic material. Any plastic cushions are made from >90% recycled plastic.
46. Bulk packaging solution may vary by region or market.
47. Wireless access point and Internet service required and sold separately. Availability of public wireless access points limited. Wi-Fi 6 (802.11ax) is backwards compatible with prior 802.11 specs.
48. Actual battery Watt-hours (Wh) will vary from design capacity. Battery capacity will naturally decrease with shelf life, time, usage, environment, temperature, system configuration, loaded apps, features, power management settings and other factors.
49. Lock must be purchased separately.
50. Requires Internet access and Windows 10 or 11 PC preinstalled with HP QuickDrop app and either an Android device (phone or tablet) running Android 7 or higher with the Android HP QuickDrop app, and /or an iOS device (phone or tablet) running iOS 12 or higher with the iOS HP QuickDrop app.
51. Available on select HP PCs with Windows 10 and higher, and with Intel processors.
52. SIM slot is not user accessible without WWAN configuration.
53. HP Support Assistant requires Windows and Internet Access
54. Test results are not a guarantee of future performance under these test conditions. Accidental damage requires an optional HP Accidental Damage Protection Care Pack.
55. Battery capacity will naturally decrease with shelf life, time, usage, environment, temperature, system configuration, loaded apps, features, power management settings and other factors.
56. Pen sold separately. Optional feature that can be configured at time of purchase or purchased separately.
57. Requires the myHP application and Windows OS.

